



THE INSTITUTE OF CETACEAN RESEARCH

4-5 TOYOMI-CHO, CHUO-KU, TOKYO 104-0055 JAPAN
PHONE: +81-3-3536-6521 FAX: +81-3536-6522

MEDIA RELEASE

15 January 2006

GREENPEACE TAKES MORE RISKS

The Institute of Cetacean Research (ICR) in Tokyo said today that Greenpeace is taking more and more risks to keep their PR campaign in the news in New Zealand and Australia.

ICR Director General Dr. Hiroshi Hatanaka said that Greenpeace put an inflatable Zodiac dangerously close to the bow of the whaling vessel at the time a Japanese harpooner shot a minke whale.

“Our harpooner had a clear shot and took it. The strike was perfect and the whale was killed instantly,” he said.

“The fact that the rope fell onto their inflatable and one of the activists fell into the water is entirely their fault. We are also concerned that they tried to cut the line because it makes it more dangerous for them.”

“Greenpeace are taking more and more dangerous risks to maintain media interest in their PR campaign, after all there’s only so many whaling shots that TV can show without public interest dropping off,” he added.

“We continue to do our utmost to ensure the safety of the activists, but we cannot foresee their increasingly dangerous stunts.”

ENDS

For further information contact:

Mr. Hideki MORONUKI, Far Seas Fisheries Division, Fisheries Agency,
Ministry of Agriculture, Forestry and Fisheries, Tel: +81-3-3502-2443

Visit also: www.icrwhale.org

ATTACHMENT



(1) Sampling vessel Yushin-Maru No. 2 harpooning a minke whale. Note Greenpeace inflatable to the right of the bow, purportedly hiding from the harpooner's angle of view.



(2) The next instant, a Greenpeace inflatable boat rushes towards the harpoon rope.



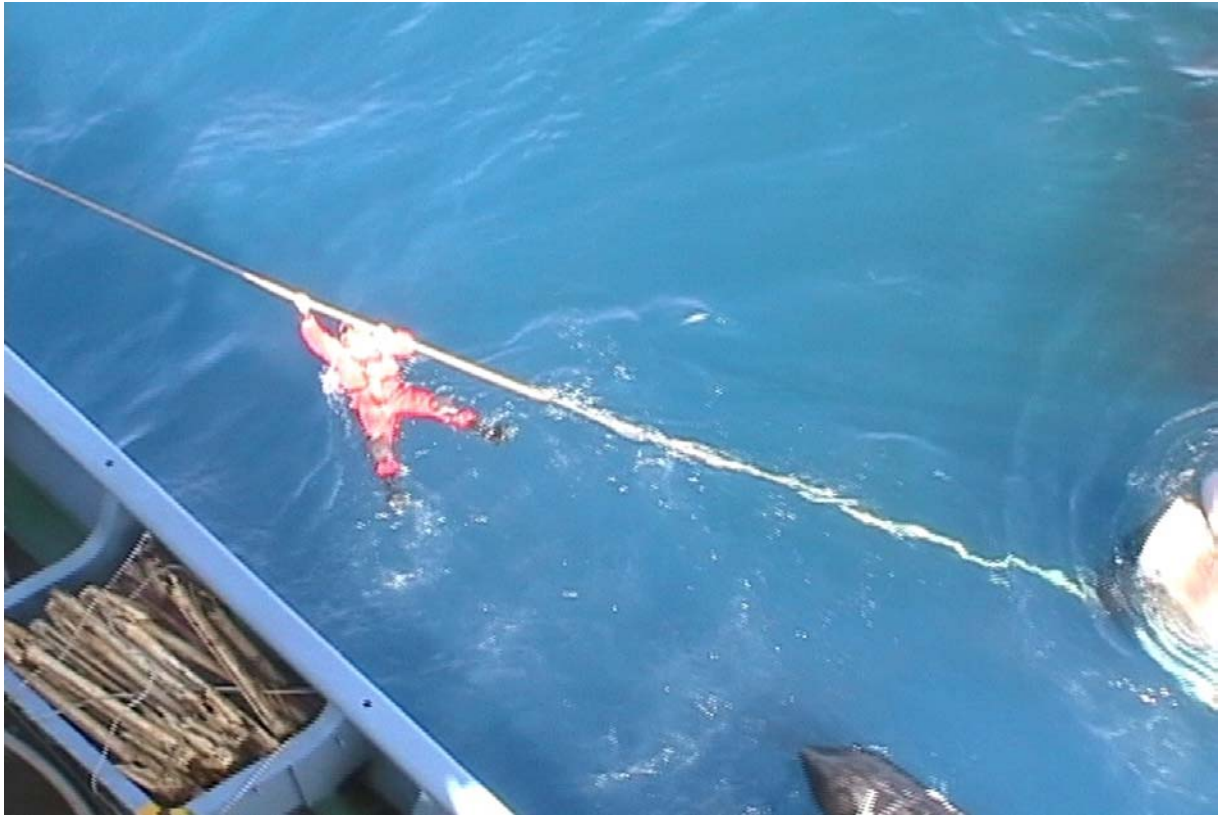
(3) Immediately after, the Greenpeace boat becomes entangled in the harpoon's rope.



(4) Entangled Greenpeace. Fortunately the minke whale was killed instantly; otherwise both inflatable and activists could have been dragged underwater by the whale, with possible fatal consequences.



(5) Activists ignore gestures from Yushin-Maru No. 2 crew urging them to quickly disentangle their boat. They seemingly were trying to cut off the rope.



(6) After disentanglement, the Yushin-Maru No. 2 starts to winch-up the minke whale. In yet another foolhardy stunt, an activist clings to the towing harpoon line. He later fell to the water and was retrieved by the inflatable.