

ONE-EYED MONSTER OF FIN WHALE

MASAHARU NISHIWAKI

On January 21, 1956, a curious foetus was found on the flensing deck of the F/F "Tonan-maru" operating in 64°49' S, 157°30' W. This curious foetus was a one-eyed monster (Cyclops) as shown in the photographs. The mother whale was a 70 feet long fin whale which had 1 corpus luteum and 5 corpora albicantia.

When observed carefully, only one eyeball existed on its short and globular shaped upper jaw. There was no depressed part like as eye cavity on the top of the angle of gape. That part projected a little on both sides with roundness. In the human Cyclops usually, the nose is absent or becomes a cylindrical tube positioned upward of the eye. In this monster the head was roundish and the blow-hole could not be found. The tip of the snout possessed a little tubercular process with some pieces of hair. The lower jaw had already the asymmetrical pigmentation that is a peculiarity of the fin whale, but the length of jaw was stocky short. There was no abnormality on the posterior part to the flipper of the body, and so the monster was a male without question. The umbilicus cord was also normal.

The body measurement data of this monster compared with four normal foetuses of the nearly same stages are shown in Table I.

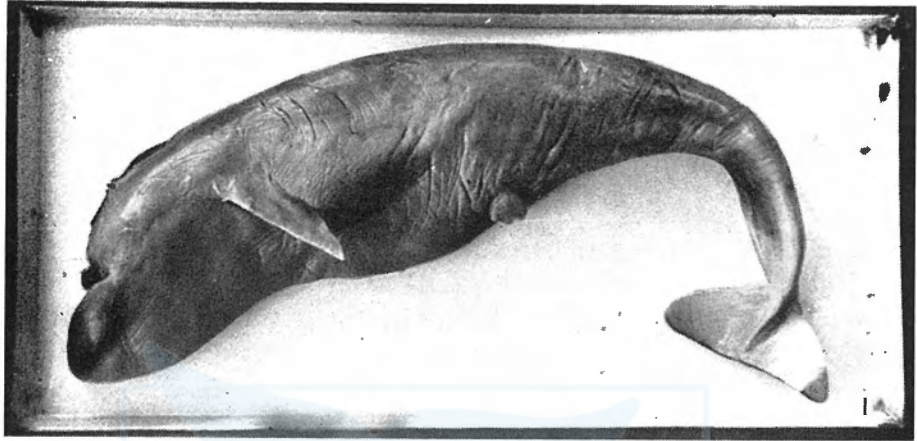
This monster may be brought to anatomical study, but since this is only one sample at hand, it is felt regretful to cut the body. This monster is now being preserved in 10% formalin tank of our Institute.

Of course it is not ascertainable as for of the cause of this abnormality, but we should like to believe that this deformity is not due to the atomic explosion. It is hoped the atomic experiments have no connection with the decrease in the whale stock besides the whaling.

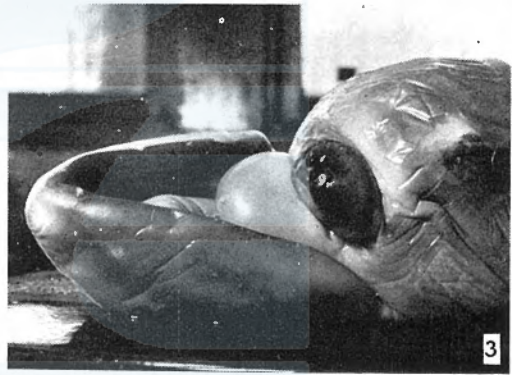
THE INSTITUTE OF CETACEAN RESEARCH

TABLE I. MEASUREMENT OF THIS MONSTER AND FOUR NORMAL FOETUSES OF FIN WHALES

Measurement	Monster		Normal foetuses		
	Antarctic	Antarctic		North Pacific	
	10T366♀	10T367♀	10T952♀	K132♀	K602♀
Tip of snout to notch of flukes (Total length)	83.0	96.0	79.0	94.0	93.0
Tip of lower jaw to notch of flukes....	88.5	97.5	80.3	—	—
Width of tip of lower jaw	1.5	1.8	—	—	—
Projection of snout beyond tip of lower jaw	5.5	1.5	1.3	—	—
Tip of snout to blowhole	—	14.0	8.5	12.0	11.0
Tip of snout to angle of gape	11.3	22.0	15.0	16.5	15.0
Tip of snout to center of eye.....	3.2	19.5	13.0	—	—
Diameter of eyeball.....	2.4	—	—	—	—
Tip of snout to tip of flipper	37.0	39.5	32.5	39.0	37.5
Tip of lower jaw to tip of flipper	42.5	41.0	39.5	—	—
Center of eye to center of ear	7.4	6.5	6.0	—	—
Notch of flukes to posterior emargi- nation of dorsal fin	26.0	25.0	20.0	25.0	24.0
Width of flukes at insertion	7.5	6.5	6.0	—	—
Total spread of tail flukes	17.5	19.5	16.5	—	—
Notch of flukes to tip of flukes.....	8.7	10.7	8.4	—	—
Notch of flukes to center of anus.....	31.0	28.5	24.0	30.0	29.5
Notch of flukes to umbilicus	47.0	45.5	36.0	46.0	45.0
Center of anus to center of repro- ductive aperture	2.5	2.5	1.5	3.0	2.0
Vertical high of dorsal fin	1.5	2.5	1.8	2.0	2.0
Length of base of dorsal fin	4.0	4.0	4.5	3.8	4.5
Axilla to tip of flipper	10.4	—	—	—	—
Anterior end of lower broder to tip of flipper.....	12.8	11.5	10.0	13.5	13.0
Greatest width of flipper	3.2	3.2	2.5	4.0	3.0



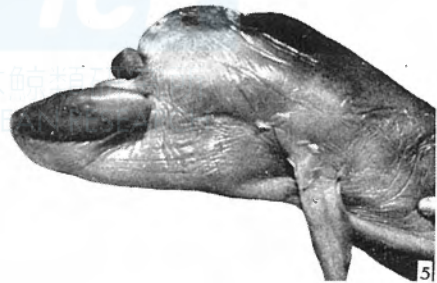
2



3



4



5

Explanation of photographs

Fig. 1. Whole body of the monster.

Fig. 2. Frontal view of the head.

Fig. 3. Weird gaze of the one eye.

Fig. 4. Right side of the head.

Fig. 5. Left side of the head.