

NOTE ON EMBRYO OF BAIRD'S BEAKED WHALE

HIDEO OMURA

On 5th August 1957 a Baird's Beaked Whale, *Berardius bairdii*, was treated at Otohama landstation in Chiba Prefecture, attached to the Tokai Gyogyo K.K. I had fortunately been there on a few days visit. This whale was a female of 1,076 cm long. It contained a functional corpus luteum in one of the ovaries, though each of the uterine cornua showed no enlargement. I cut open the cornu longitudinally and obtained a embryo shown in figure 1. The length of this embryo is 12mm from head to caudal flexure, and measured in straight. The tail flukes are not developed, the tail being tapered. The hind limb protrusion is not observed.

According to Omura, Fujino & Kimura (1955) the pairing of the Baird's beaked whale is taken place in winter, and the majority in February. This embryo, therefore, shows an exceptional pairing taken place in summer.

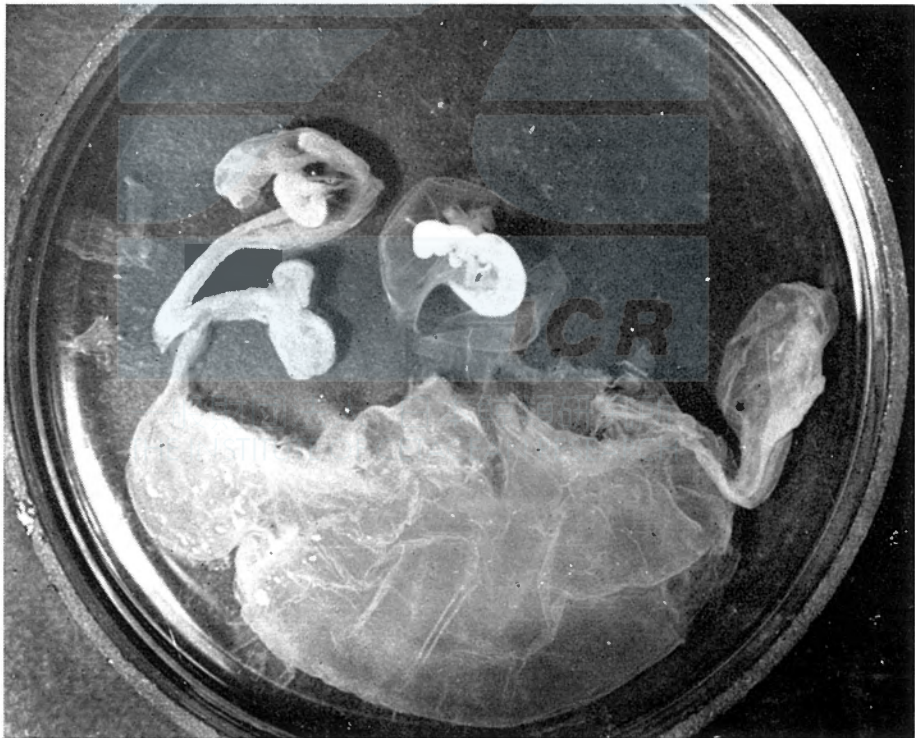


Fig. 1. Embryo of Baird's beaked whale. 12 mm long.
(Photo by K. Fujino)

Recently a photograph shown in figure 2 was kindly forwarded me from Prof. I. Kubo of the Tokyo University of Fisheries. According to the discription attached to this picture, this is a fetus of Baird's beaked whale, taken on 21st August 1927 at Tateyama-machi, a nearby town of the Otohama landstation. Body length of this fetus is recorded as 8 shaku (242 cm), and it concides well with the growth curve given by the above cited authors.

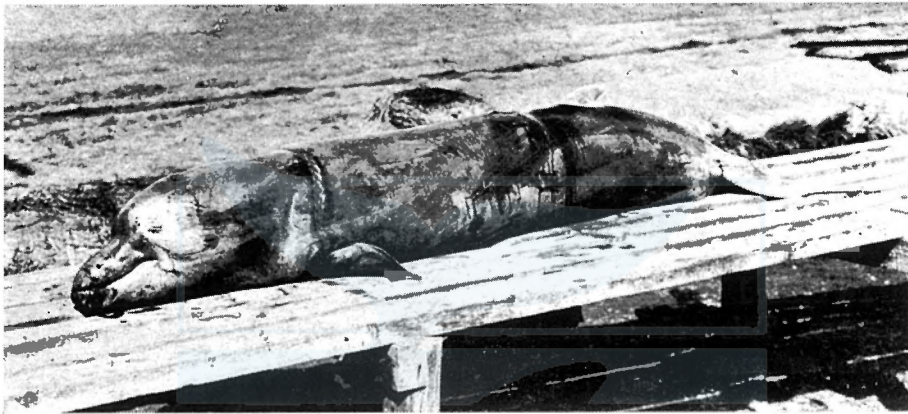


Fig. 2. Fetus of Baird's beaked whale. 242 cm long.

REFERENCE

- OMURA, H., FUJINO, K. and KIMURA, S. (1955). Beaked whale *Berardius bairdi* of Japan, with notes on *Ziphius cavirostris*. *Sci. Rep. Whales Res. Inst.*, No. 10: 89-132.

ICR

一般財団法人 日本鯨類研究所
THE INSTITUTE OF CETACEAN RESEARCH